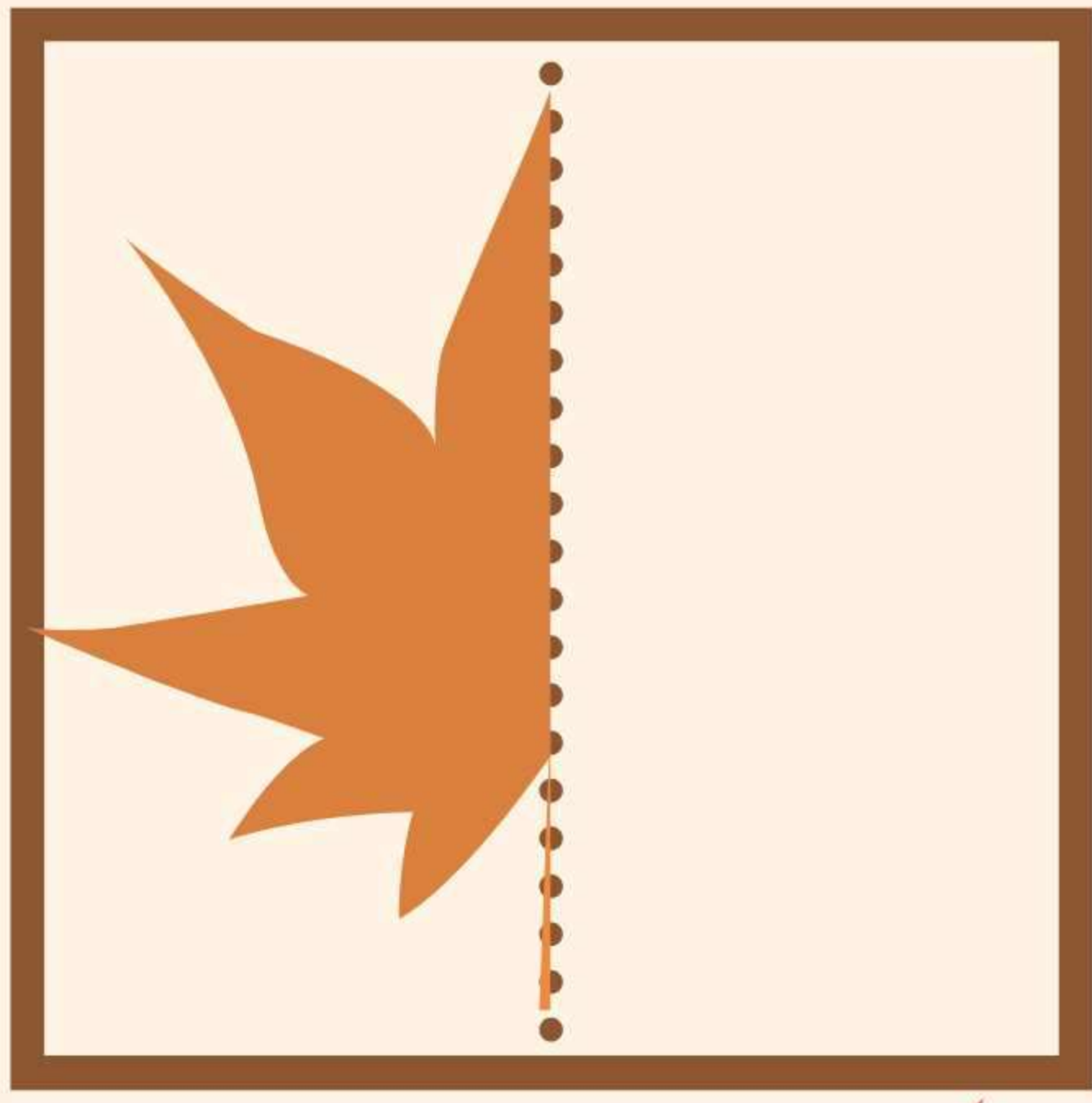
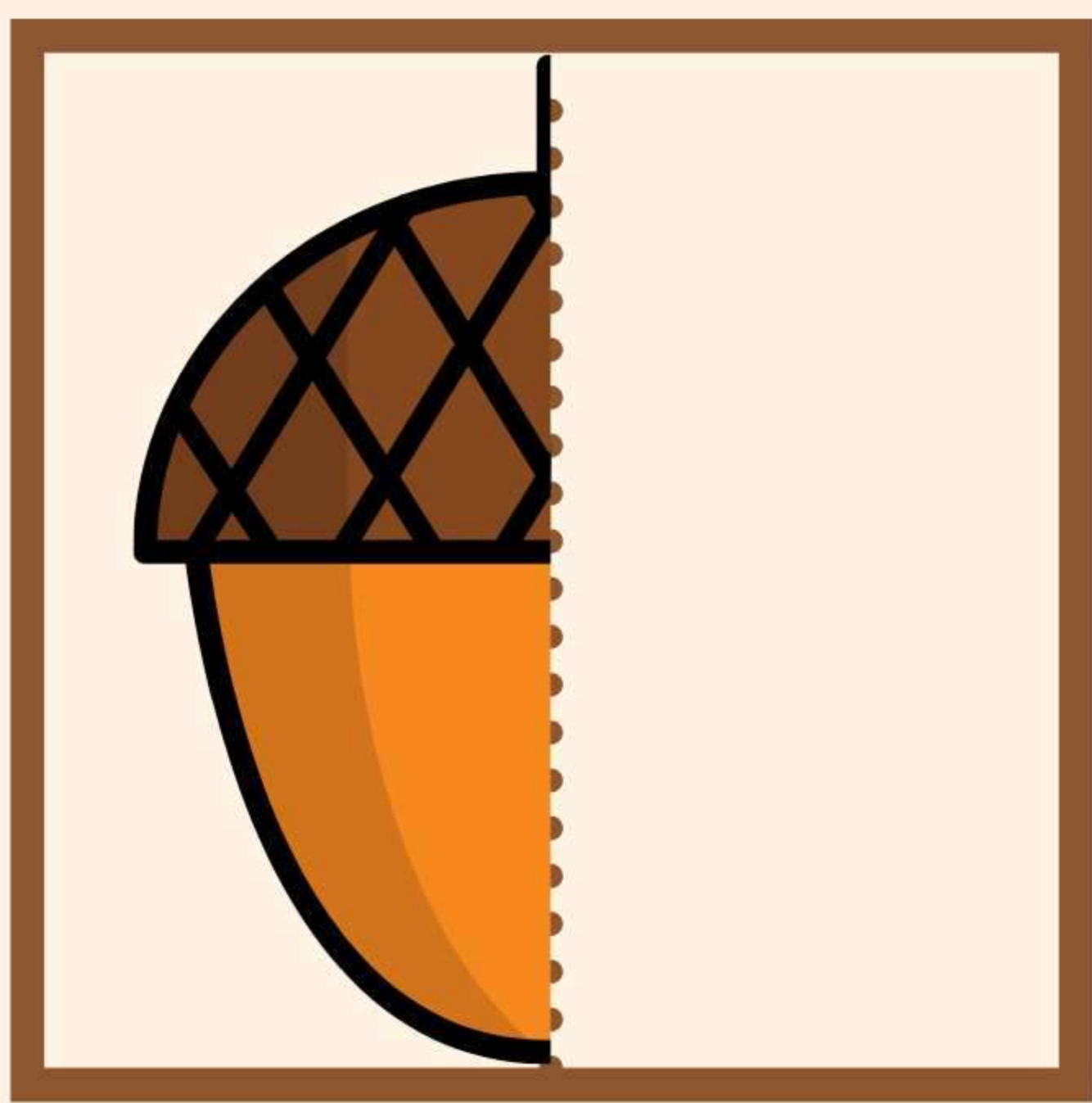
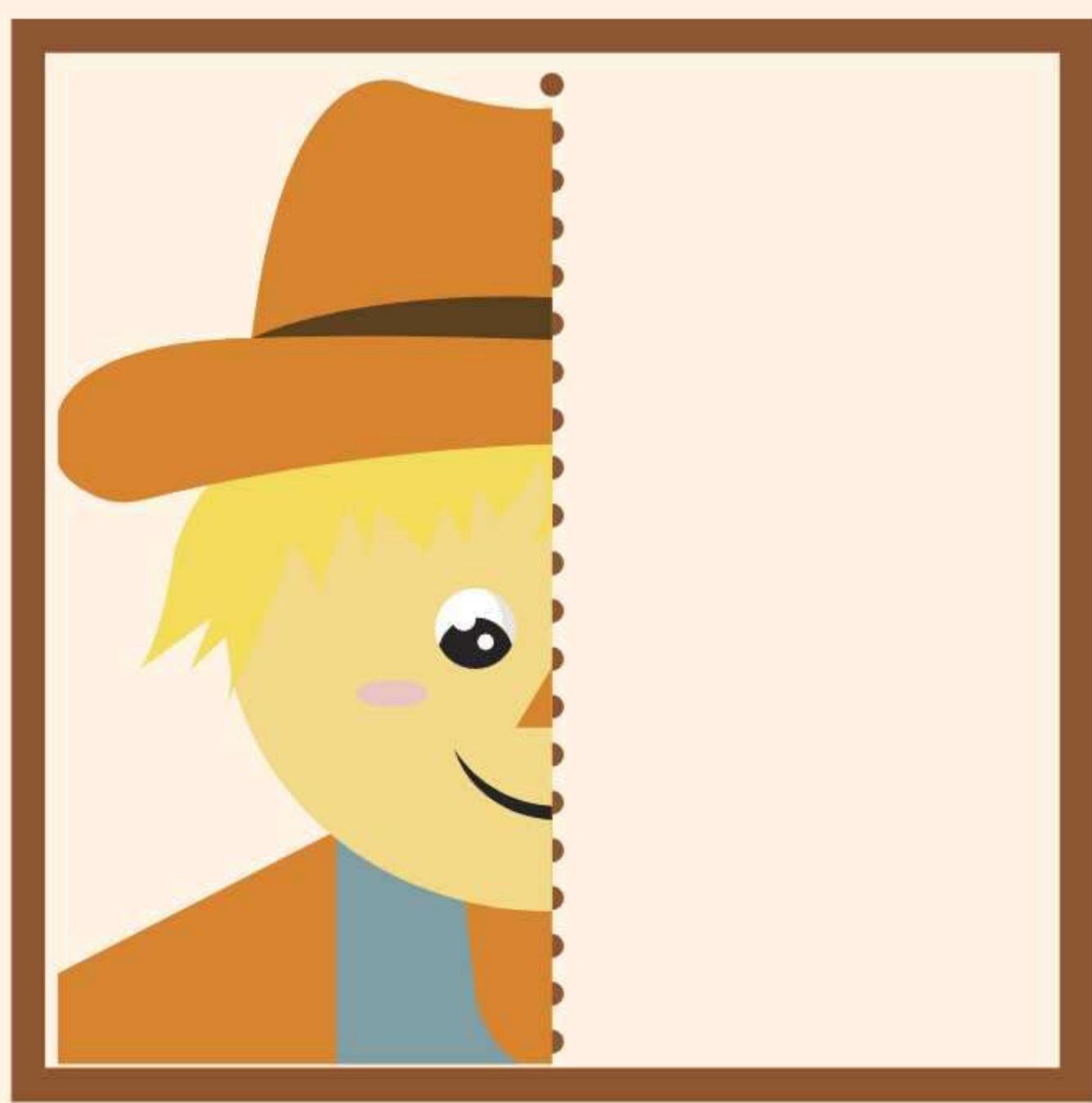




Draw the other half!



Word Scramble

Unscramble the word and write it below on the line.



palpe



bumrlela



fela



uppmikn



ipe



tkruye



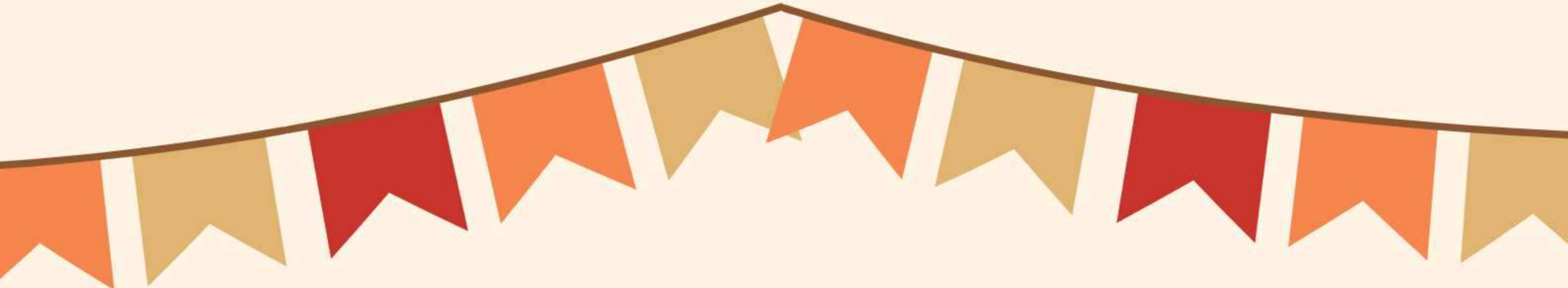
Hlaoleewn



Atuunm



krae



Draw a line to join each picture with the letter that makes its beginning sound

A U T U M N



TURKEY



UMBRELLA



UGLY WITCH



ACORN

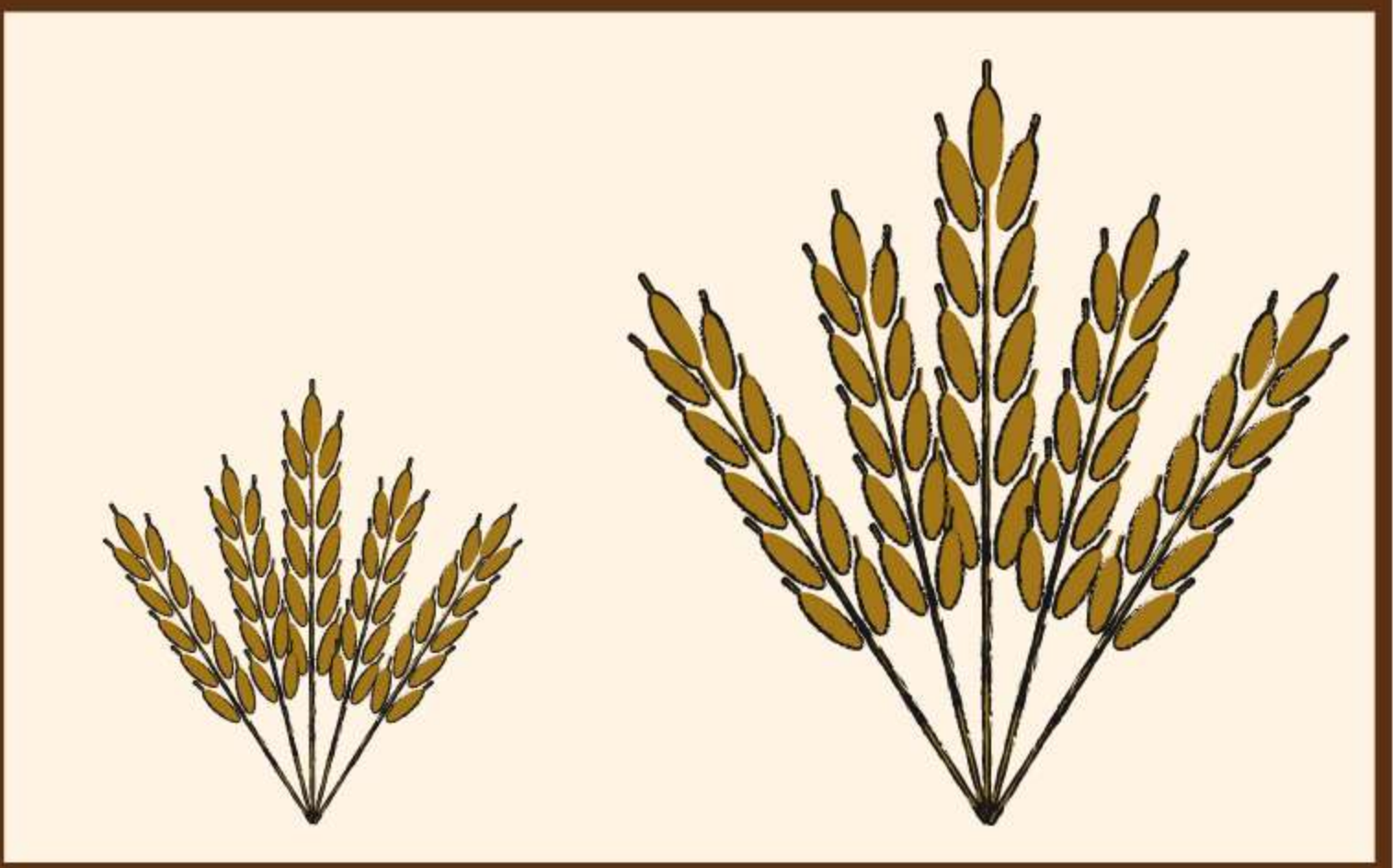
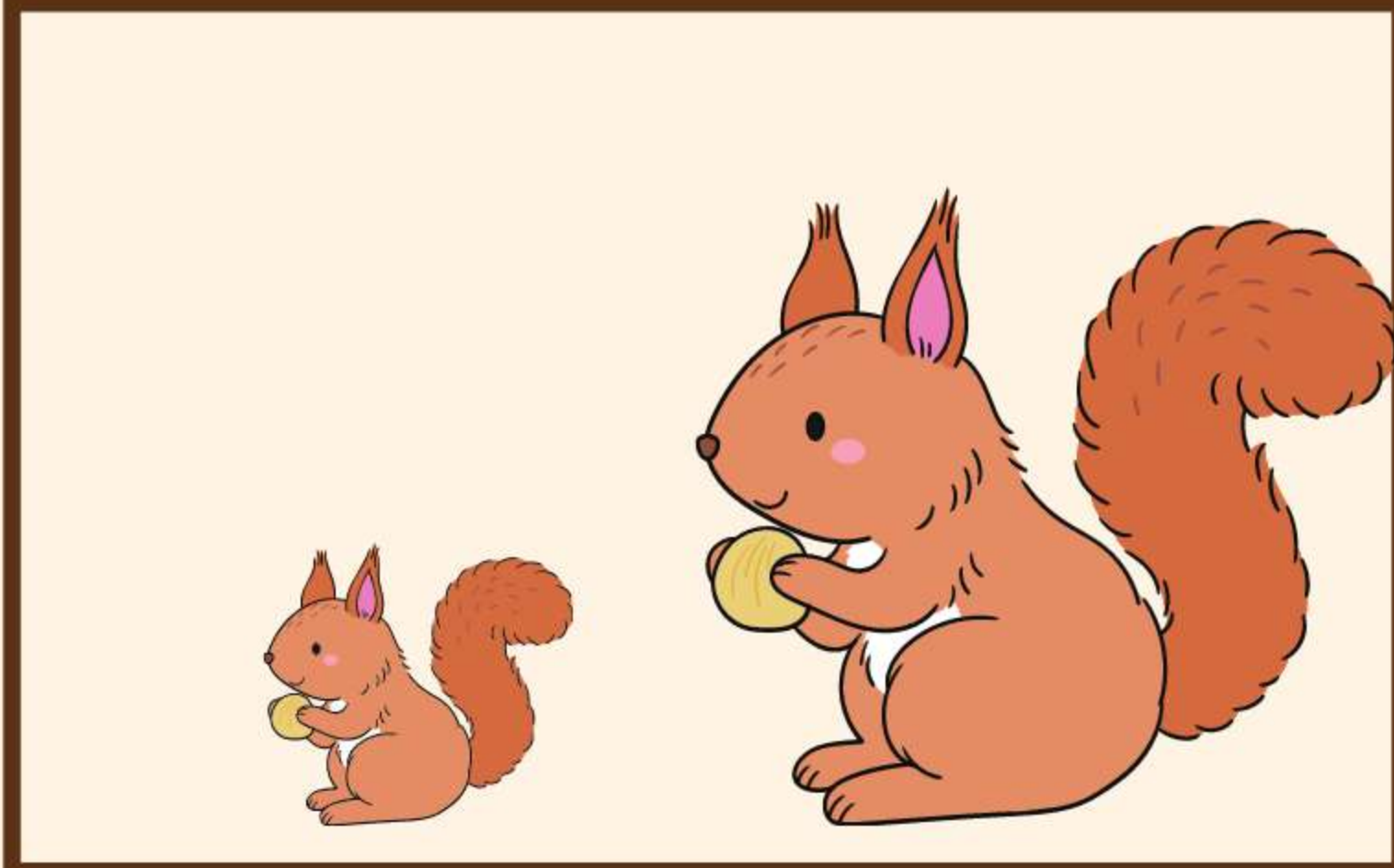
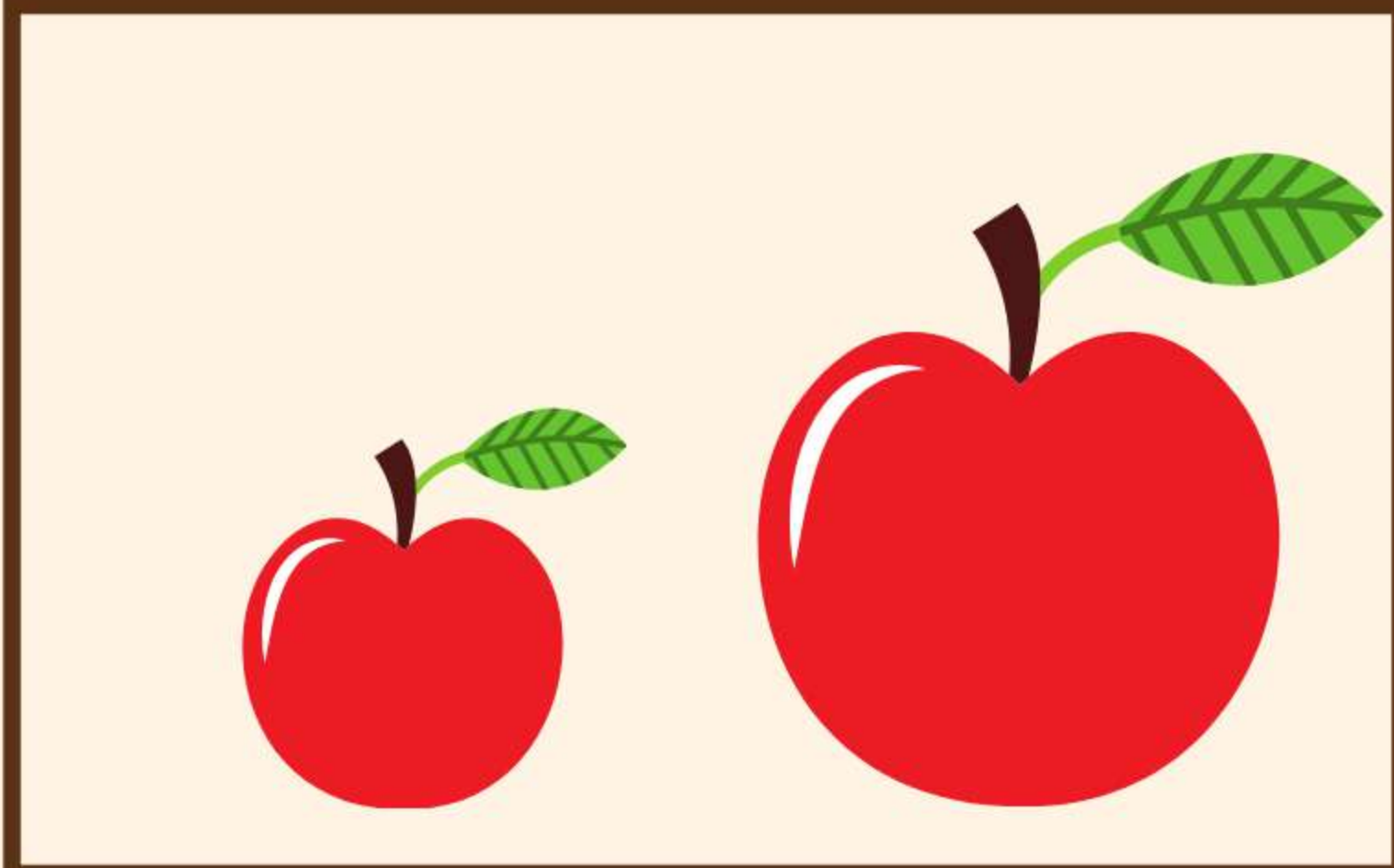


MUSHROOM



NUTS

Which one is big?
Circle it.





Read the color words. Color the leaves that color.

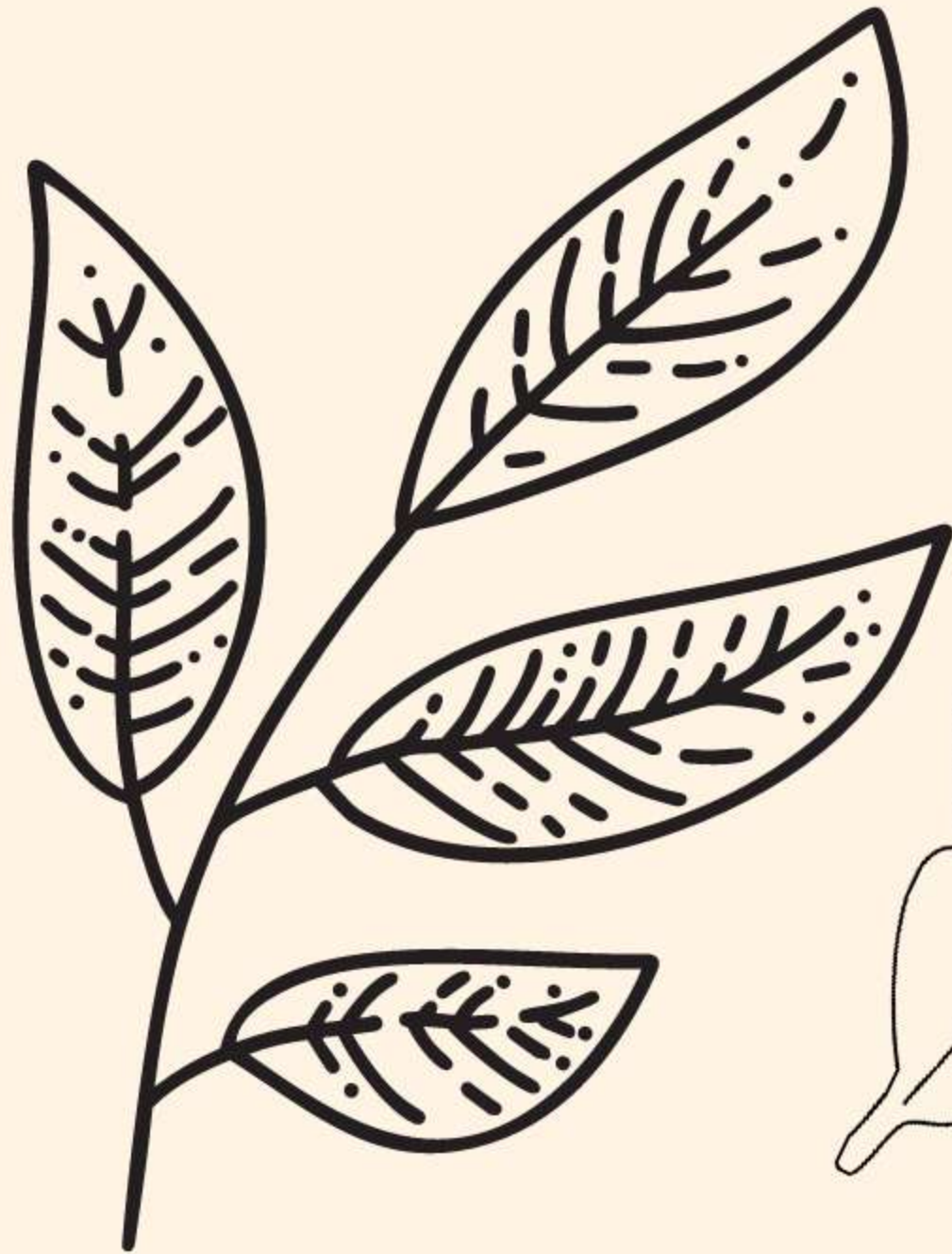


RED

YELLOW



ORANGE



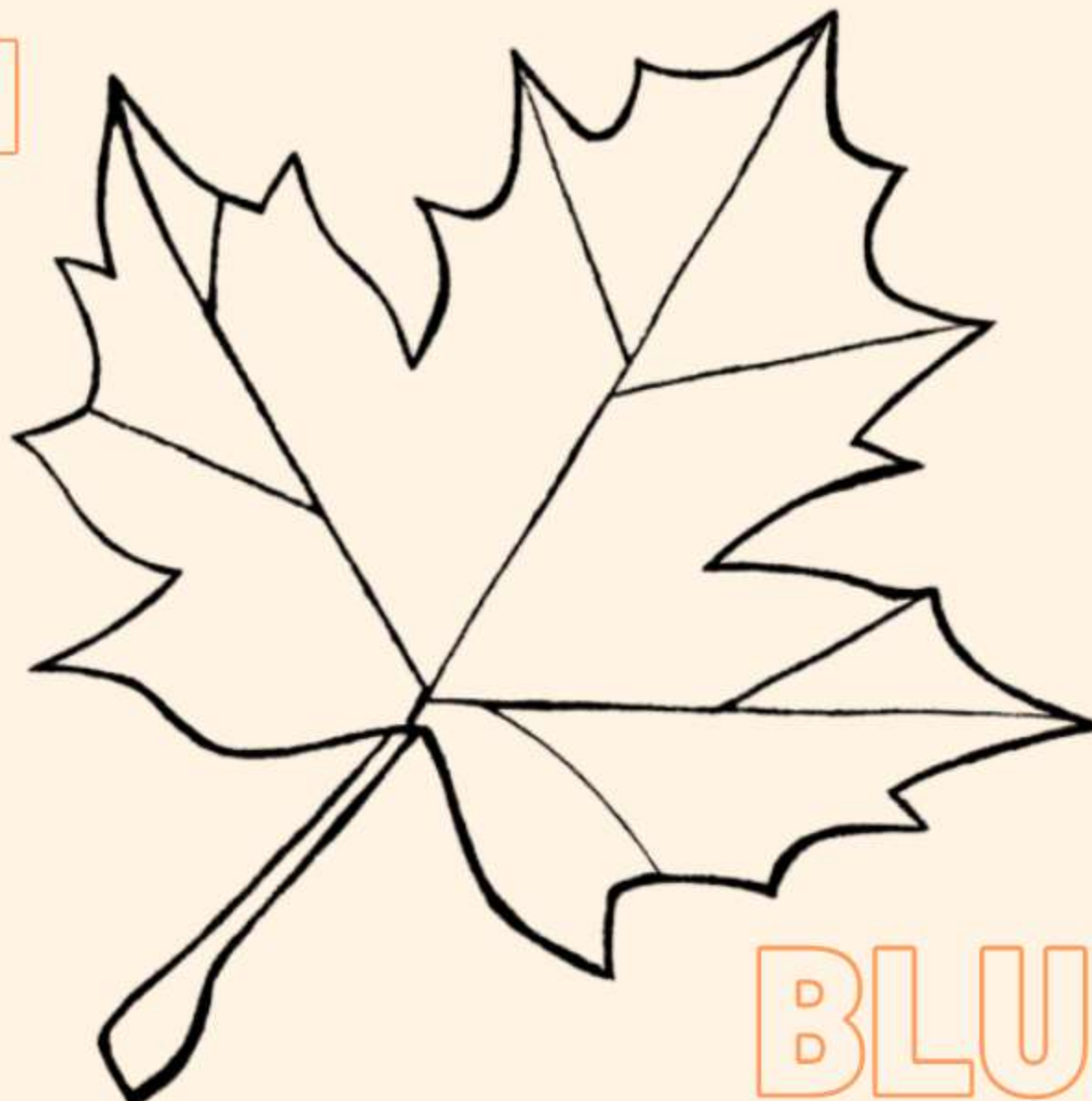
GREEN



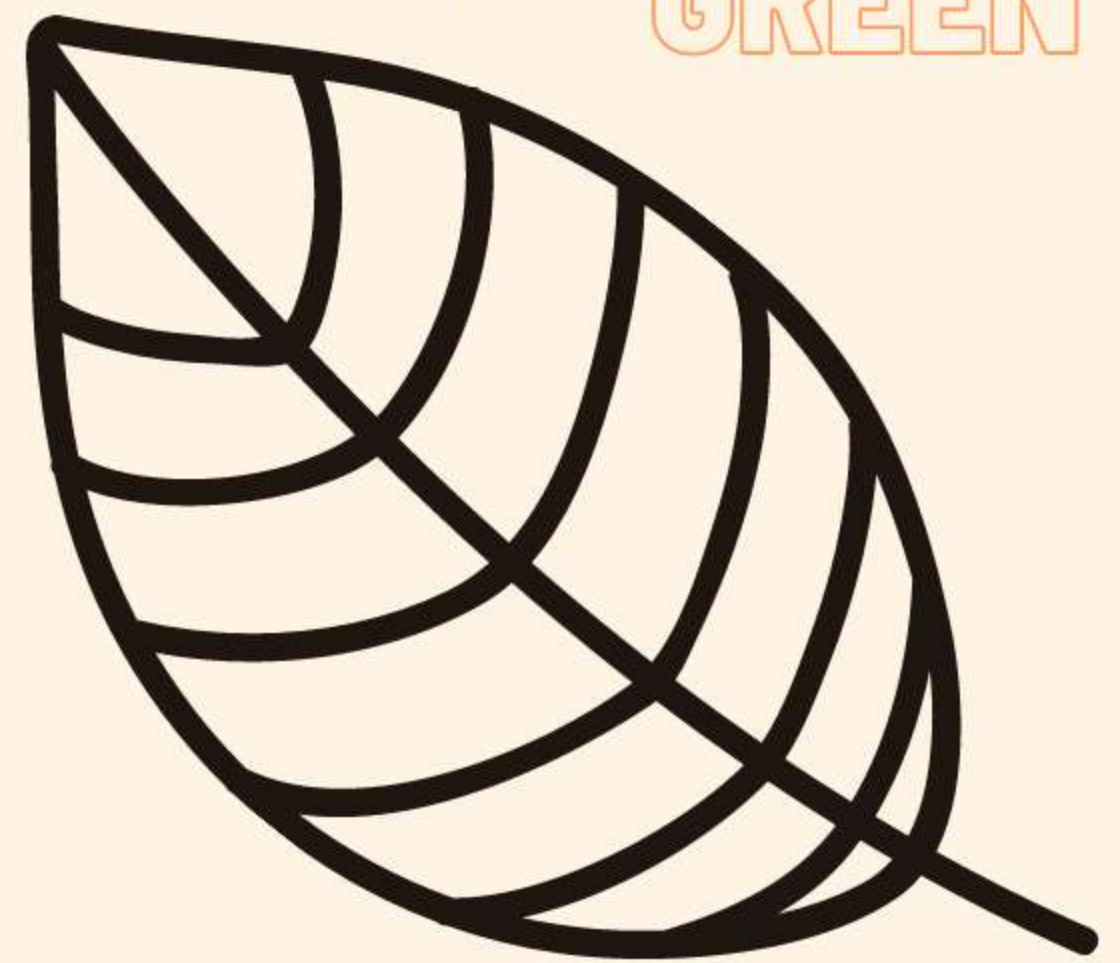
PINK



BROWN



BLUE



PURPLE